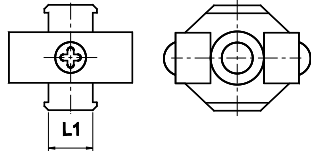


AIR PREPARATION UNITS - ACCESSORIES

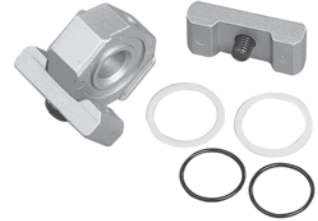
Accessories - for Modular construction

Cat No APA - 01 - C

SPACER



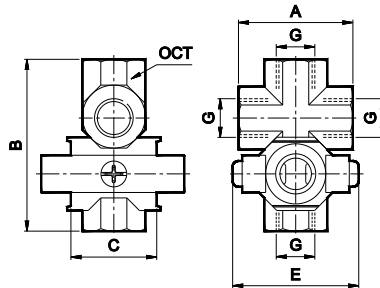
| Adoptable to Model series | L1 | Ordering No. |
|---------------------------|----|--------------|
| F13, L13, R13, FRC13 | 12 | A2S01 |
| F14, L14, R14, FRC14 | 14 | A2S02 |
| F15, L15, R15, FRC15 | 16 | A2S03 |
| F17, R17, L17, FRC17 | 15 | A2S04 |



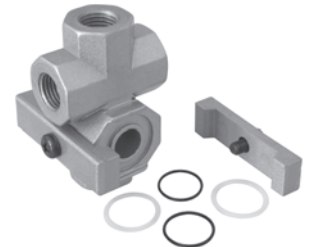
How to order :- Mention the ordering number required

Example :- Spacer for 3/8 Filter, Regulator, Lubricator series F14, R14, L14 - Ordering no : A2S02

X SPACER ASSEMBLY - Mountable between FRL, FRC modular units. - 4 way connector



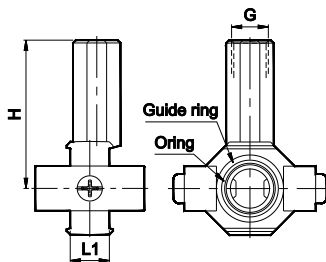
| Adoptable to Model series | G | A | B | C | E | OCT | Ordering No. |
|---------------------------|-----|----|------|----|----|-----|--------------|
| FRLM13, FRCLM13 | 1/4 | 40 | 60 | 30 | 45 | 22 | A2M01 |
| FRLM14, FRCLM14 | 3/8 | 45 | 66.5 | 35 | 55 | 27 | A2M02 |
| FRLM15, FRCLM15 | 1/2 | 56 | 83 | 40 | 70 | 30 | A2M03 |



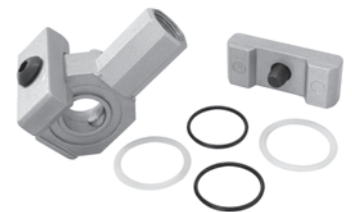
How to order :- Mention the ordering number required

Example :- X Spacer assembly for 3/8 FRLM, FRCLM Series : Ordering no : A2M02

T SPACER



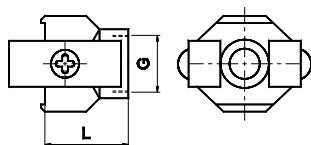
| Adoptable to Model series | Size | G | L1 | H | Ordering No. |
|---------------------------|------|-----|----|----|--------------|
| F13, R13, L13, FRC13 | 1/4 | 1/8 | 12 | 50 | A2T01 |
| F14, R14, L14, FRC14 | 3/8 | 1/4 | 14 | 53 | A2T02 |
| F15, R15, L15, FRC15 | 1/2 | 3/8 | 16 | 52 | A2T03 |



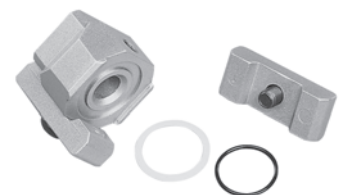
How to order :- Mention the ordering number required

Example :- T Spacer for 3/8 Filter, Regulator, Lubricator, FRC Series F14, R14, L14, FRC14 : Ordering no : A2T02

PIPING ADAPTOR



| Adoptable to Model series | G | L | Ordering No. |
|---------------------------|------|----|--------------|
| F13, L13, R13, FRC13 | 1/4 | 27 | A2P01 |
| F14, L14, R14, FRC14 | 3/8 | 29 | A2P02 |
| F15, L15, R15, FRC15 | 1/2 | 32 | A2P03 |
| F17, R17, L17, FRC17 | G3/4 | 35 | A2P07 |
| | G1 | 35 | A2P08 |



How to order :- Mention the ordering number required

Example :- Piping Adaptor for 3/8 Filter, Regulator, Lubricator series F14, R14, L14 - Ordering no : A2P02

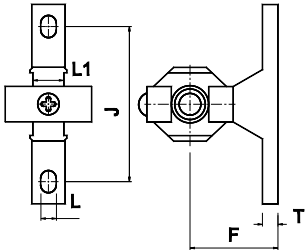
Subject to change

AIR PREPARATION UNITS - ACCESSORIES

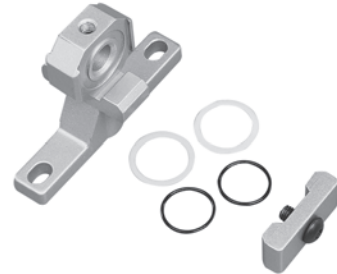
Accessories - for Modular construction

Cat No APA - 01 - C

WALL MOUNTING BRACKET



| Adoptable to Model series | L1 | J | L | F | T | Ordering No. |
|---------------------------|----|-----|----|----|----|--------------|
| F13, L13, R13, FRC13 | 12 | 50 | 7 | 35 | 7 | A2W01 |
| F14, L14, R14, FRC14 | 14 | 70 | 7 | 45 | 7 | A2W02 |
| F15, L15, R15, FRC15 | 16 | 90 | 9 | 55 | 9 | A2W03 |
| F17, R17, L17, FRC17 | 15 | 100 | 12 | 70 | 10 | A2W04 |



How to order :- Mention the ordering number required

Example :- Wall mounting Bracket for 3/8 Filter, Regulator, Lubricator series F14, R14, L14 : Ordering no : A2W02

KIT FOR MODULAR CONSTRUCTION

For Modular construction, order accessories as given below

| | Wall mounting bracket | Piping Adaptor |
|-------|-----------------------|----------------|
| FRCLM | 1 | 2 |
| FRLM | 2 | 2 |