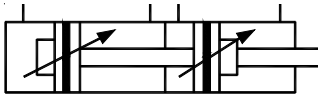


# AIR CYLINDERS

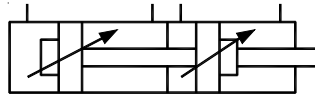
Series A23T, A24T

Cat No A23T, A24T - 01 - 01 - A

## Tandem Cylinders - ( Series A23T, A24T - Ø32 to 125 mm )



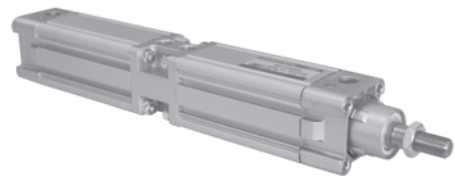
A23T - Magnetic



A24T - Non-magnetic

### Features

- Adjustable cushioning at both ends
- Wide varieties of mountings as per ISO 15552 / VDMA 24562 standards
- Magnetic and Non magnetic version
- Aluminium profile (square) cylinder barrel
- Magnetic sensor common for all sizes ( Refer Magnetic sensor catalogue )
- Piston rod - Non rusting (SS 303 material on request)\*\*



### Function

A tandem cylinder consists of two or more cylinders arranged one behind the other but designed as a single unit. By connecting 2 or 3 cylinders with the same piston diameter and stroke in series, the force in the extended condition can be doubled or tripled compared to a single cylinder.

The force in the return stroke corresponds to that of a single cylinder with corresponding piston diameter.

### Technical Specifications

Cylinder bore Ø	( mm )	32	40	50	63	80	100	125
Cushion stroke	( mm )	15	15	15	13	19	19	29
Standard strokes *	( mm )	25, 50, 80, 100, 125, 160, 200, 250, 300, 320, 400, 500						50, 80, 100, 125, 160, 200, 250, 300, 320, 400, 500
Medium		Compressed air - filtered - lubricated						
Working pressure		0.5 - 10 bar						
Medium temperature		5° - 60° C						
Materials of construction		Aluminium, Brass, Nitrile, Steel, Acetal, Polyurethane						
Mountings		Basic cylinder, Foot mounting, Front flange, Rear flange, Male clevis, Male clevis (with spherical bearing), Female clevis, Female clevis (King pin), Front trunnion, Rear trunnion						
Accessories		Clevis foot bracket, Clevis foot bracket (spherical) , Wall mounting bracket, Trunnion bracket, Rod end fork, Rod end aligner, Rod end spherical eye						

\* For Non standard or longer stroke cylinders, contact your regional dealer or **JANATICS**

\*\* On special request only

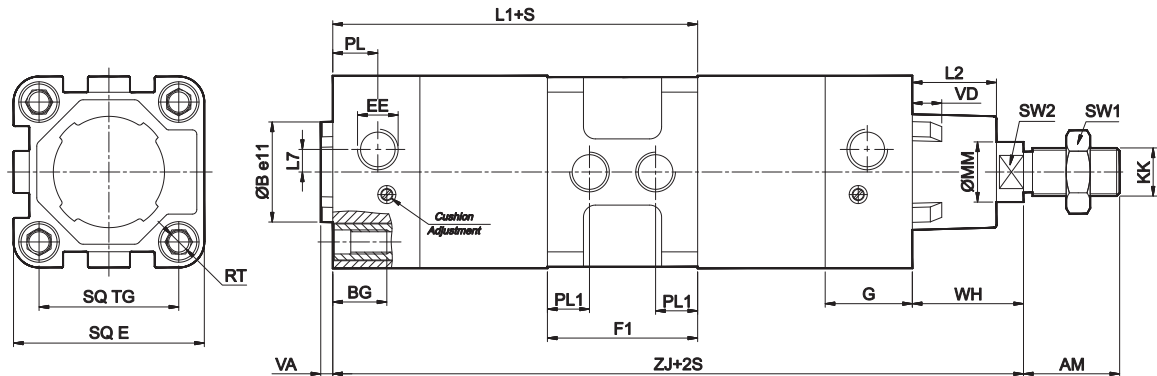
**Note** : For details of Cylinder Accessories & Mountings, refer catalogue **Cat No A23, A24 - 01 - 02 - C** (Page no. 1.4.1) and Magnetic sensor, refer catalogue **Series AM4** (Page no. 1a.1.1)

# AIR CYLINDERS

Series A23T, A24T

Cat No A23T, A24T - 01 - 01 - A

## Tandem Cylinders - ( Series A23T, A24T - Ø32 to 125 mm )



+S = Add stroke  
+2S = Add stroke twice

Cylinder Bore Ø	KK	AM	MM	SW2	SW1	B e11	VD	VA	L2	E max	G	TG	RT	BG min	EE	PL	L7	WH	Tol	PL1	F1	L1	ZJ	Tol	Stroke tol
32	M10x1.25	22	12	10	17	30	6	4	18.5	45	25.5	32.5	M6	16	G1/8	13	5	26	±3	9	38	108.5	205	±2	+5 0
40	M12x1.25	24	16	13	19	35	6.5	4	20.5	51	29	38	M6	16	G1/4	14.5	5	30	±3	11	44	122	230	±2.5	+6 0
50	M16x1.5	32	20	16	24	40	6.5	4	28	64	29	46.5	M8	16	G1/4	15	7.5	37	±3.5	14	50	129	245	±3	+7 0
63	M16x1.5	32	20	16	24	45	6.5	4	27.5	74	35	56.5	M8	16	G3/8	17	10	37	±4	17	64	152	277	±3	+7 0
80	M20x1.5	40	25	21	30	45	6.5	4	34	94	35	72	M10	16	G3/8	18	14	46	±3.5	19	68	164	306	±3	+7 0
100	M20x1.5	40	25	21	30	55	6.5	4	35	111	38.5	89	M10	16	G1/2	18	10	51	±4	21	75	177.5	331	±3	+7 0
125	M27x2	54	32	27	41	60	10	6	48.5	136	44	110	M12	24	G1/2	20	12	65	±4	18.5	70	189	373	±3	+7 0

For details of Mountings & Accessories refer Product Catalogue Cat No A23, A24 - 01 - 02 - C (Page no. 1.4.1)

## How to order

Model		Tandem Cylinder		Bore Ø (mm)		Stroke (mm)		Mountings	
23	Magnetic cylinder	T	- Tandem	032	- Ø 32	025	- 25	L	- Foot Mounting
24	Standard cylinder			040	- Ø 40	050	- 50	F	- Front Flange
				050	- Ø 50	080	- 80	R	- Rear Flange
				063	- Ø 63	100	- 100	S	- Male Clevis
				080	- Ø 80	125	- 125	G	- Male Clevis (with spherical bearing)
				100	- Ø 100	160	- 160	D	- Female Clevis
				125	- Ø 125	200	- 200	K	- Female Clevis (King pin)
						250	- 250	M	- Rear Trunnion
						300	- 300	N	- Front Trunnion
						320	- 320		
						400	- 400		
						500	- 500		

### Note

For details of Accessories for Magnetic sensor, refer product catalogue **Series AM4** (Page no. 1a.1.1)

### Example :

Ordering no. for tandem cylinder with 40 dia bore, 50 mm stroke with female clevis mounting: **A24T 040 050 D**

### Note:

If ordered as 40 dia, 50 mm stroke cylinder, tandem cylinder **A24T 040 050** will be supplied.

For repeat order when the details are taken from cylinder nameplate, mention the mounting style separately.

Subject to change