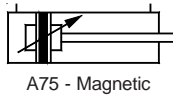


A76 - Non-magnetic



A75 - Magnetic

AIR CYLINDER

Series A75, A76

Cat No A75, A76 - 01 - 01

Round Cylinders - Ø32, 40, 50 and 63 mm

Double Acting with Adjustable Cushioning

Features

- Available in magnetic and Non magnetic version
- Adjustable cushioning at both ends
- Threaded end cover - hence direct mounting on the machine is possible
- Miniature type - compact in size
- Piston rod made of Non corrosive stainless steel piston rod (SS303)



Applications

- Suitable for Packing and Packaging machines,
- Printing machines,
- Machine tools / SPMs,
- Food industries,
- Medical equipments,
- Textile machines,
- Leak testing equipment,
- Air gauging equipment and many more

Technical Specifications

Bore dia (mm)	32	40	50	63
Cushion stroke (mm)	12	15	15	15
Standard strokes * (mm)	25 40 50 80 100 125 160 200 250 300 320 400 500			
Medium	Compressed air - filtered - lubricated			
Working pressure	0.5 - 10 bar			
Medium temperature	5° - 60° C			
Materials of construction	Cylinder barrel, Piston rod - SS, Aluminium, Brass, Nitrile, Polyurethane, Steel, Acetal,			
Mountings	Front foot mounting, Double foot mounting, Front trunnion, Rear trunnion			
Accessories	Clevis foot bracket (Rear end cover side), Clevis foot bracket (Suitable for Front and Rear side), Rod end fork, Rod end aligner, Rod end spherical eye,			

* For Non standard or longer stroke cylinders, contact your regional dealer or JANATICS

Output force (force in N : 1N = 0.1 kgf)

Cylinder bore Ø (in mm)	Rod Ø (in mm)		Working pressure in bar								
			2	3	4	5	6	7	8	9	10
32	12	Extend	145	217	289	362	434	507	579	651	724
		Retract	124	187	249	311	373	435	498	559	622
40	16	Extend	226	339	452	565	678	792	905	1018	1130
		Retract	190	285	380	475	570	665	760	855	950
50	20	Extend	353	530	707	883	1060	1237	1413	1590	1767
		Retract	297	445	594	742	891	1039	1187	1336	1484
63	20	Extend	561	842	1122	1403	1683	1964	2244	2525	2805
		Retract	505	757	1009	1261	1514	1766	2018	2270	2523

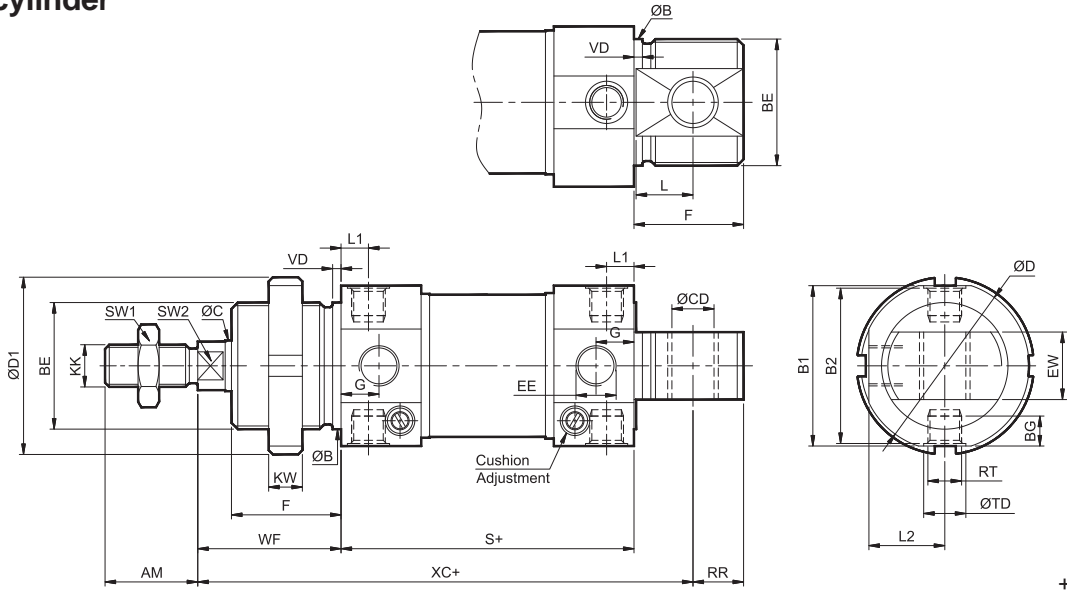
(Above values have been worked out taking frictional loss into consideration)

AIR CYLINDER

Series A75, A76

Cat No A75, A76 - 01 - 01

Basic cylinder



+ Add stroke

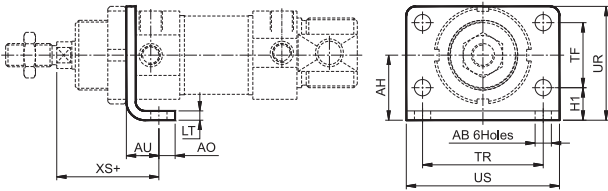
Cylinder bore Ø	BE	F	ØCD E10	L	RR	G	EE	L1	VD	L2	BG	TD H10	B h9	D1	C	D	S	Tol	XC	Tol
32	M30x1.5	26	10	13	12	9	G1/8	6.5	2	18	6.5	10	30	42	12	40	69.5	±1	117.5	±1
40	M38x1.5	30	12	15	14	12	G1/4	10	3	22.5	8	12	38	50	16	49	84.5		139.5	
50	M45x1.5	33	16	16	16	12	G1/4	9	3	27.5	10	14	45	60	20	59	86		147	
63	M45x1.5	33	16	16	16	13	G3/8	9.5	3	35	15	16	45	60	20	73	94		156.2	

Cylinder bore Ø	WF	Tol	KW	EW d13	B1	B2	SW1	SW2	KK	AM	RT	Stroke Tol
32	34	±1.3	8	16	38	36.8	17	10	M10x1.25	22	M8x1	+2 0
40	39		10	18	46	44.8	19	13	M12x1.25	24	M10x1	
50	44		10	21	57	55.8	24	17	M16x1.5	32	M12x1.5	
63	45	±1.5	10	21	70	67	24	17	M16x1.5	32	M14x1.5	+2.5 0

MOUNTINGS FOR AIR CYLINDER Series A75, A76

Front Foot Mounting

+ Add stroke

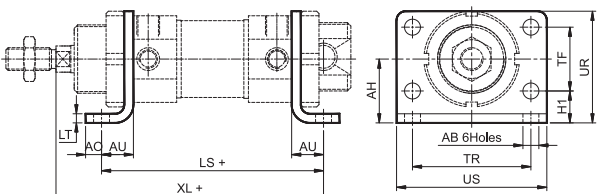


Cylinder bore Ø	UR ±0.5	AB H13 ±0.2	TR ±0.2	AH	Tol	AO	AU	LT	US	TF	H1	XS	Tol	Ordering No
32	49	7	52	28	±0.3	7	14	4	66	28	14	44	±1.6	ML4032
40	58	9	60	33		10	20	5	80	30	18	54		ML4040
50	70	9	70	40		10	20	6	90	40	20	58		ML4050
63	80	9	76	45		10	20	6	96	50	20	59	±1.8	ML4063

* Suitable for reaming

Double Foot Mounting

+ Add stroke



Cylinder bore Ø	UR ±0.5	AB H13 ±0.2	TR ±0.2	AH	Tol	AO	AU	LT	US	LS ±1.4	XL ±1.5	TF	H1	Ordering No
32	49	7	52	28	±0.3	7	14	4	66	97.5	117.5	28	14	MS4032
40	58	9	60	33		10	20	5	80	124.5	143.5	30	18	MS4040
50	70	9	70	40		10	20	6	90	126	150	40	20	MS4050
63	80	9	76	45		10	20	6	96	134	159	50	20	MS4063

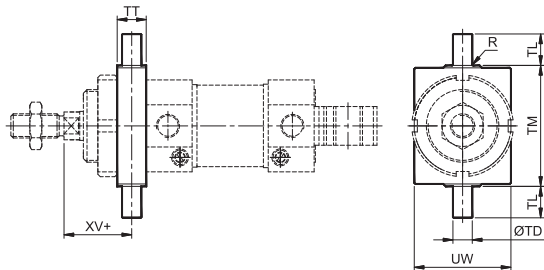
* Suitable for reaming

AIR CYLINDER

Series A75, A76

Cat No A75, A76 - 01 - 01

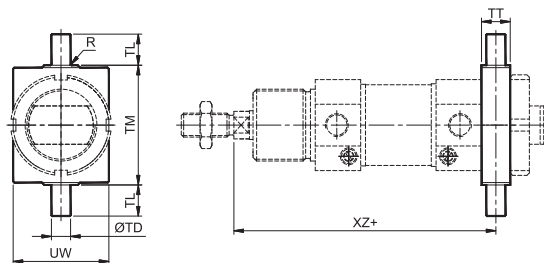
Front Trunnion



+ Add stroke

Cylinder bore Ø	TD f8	TL h14	TM h14	UW	TT	R	XV	Tol	Ordering No
32	8	13	50	40 ^{-0.5}	12	0.5	28	±1.5	MT030
40	10	16	60	50	15	0.5	31.5		MT038
50	12	18	80	65	20	1	34		MT045
63	12	18	80	65	20	1	35	±1.8	MT045

Rear Trunnion

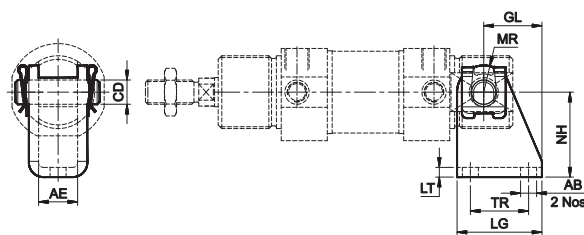


+ Add stroke

Cylinder bore Ø	TD f8	TL h14	TM h14	UW	TT	XZ ±1.5	R	Ordering No
32	8	13	50	40 ^{-0.5}	12	109.5	0.5	MT030
40	10	16	60	50	15	131	0.5	MT038
50	12	18	80	65	20	140	1	MT045
63	12	18	80	65	20	149	1	MT045

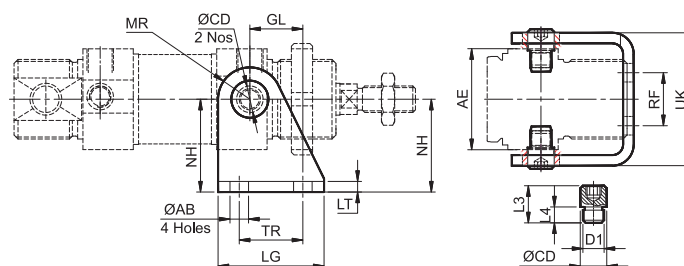
ACCESSORIES FOR AIR CYLINDER Series A75, A76

Clevis Foot Bracket (Suitable for Rear End Cover side)



Cylinder bore Ø	AE H13	AB H13	LT	NH	Tol	MR	ØCD e8	TR	Tol	GL	LG	Ordering no.
32	16.1	6.6	4	35	+0.4 -0.2	11	10	24	±0.2	18.5	35	AA030
40	18.1	9	5	40		13	12	30		24.5	45	AA038
50 & 63	21.1	9	6	45	+0.5 -0.2	14	16	34		28	50	AA045

Clevis Foot Bracket (Suitable for Front & Rear End Cover sides)



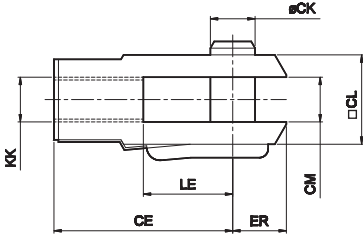
Cylinder bore Ø	ØCD H8/f8	AE	D1	NH	GL	LT	ØAB H14	L3	L4	Tol	MR	RF	Tol	TR	UK	LG	Ordering no.
32	10	38.1	M8x1	35	20	4	7	14	6	±0.1	12	20	±0.2	24	50.1	40	AD032
40	12	46.1	M10x1	40	27	4	9	17	7.5		13	28		30	60.1	50	AD040
50	14	57.1	M12x1.5	45	30	6	9	20.5	9.5		14	36		34	74.1	54	AD050
63	16	70.4	M14x1.5	50	34	6	9	26.5	13.5		15	42		35	88.1	65	AD063

AIR CYLINDER

Series A75, A76

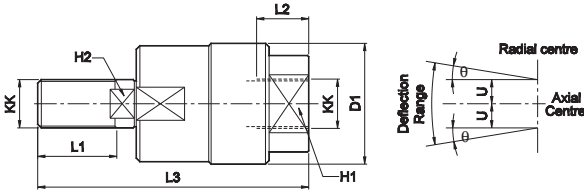
Cat No A75, A76 - 01 - 01

Rod end Fork (ISO 8140)



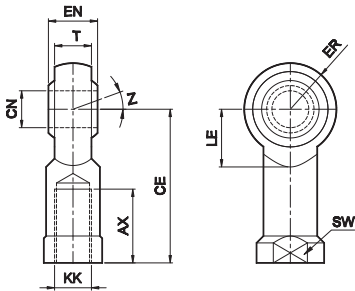
Cylinder bore Ø	KK	CE	CK f 8	CM B12	LE	ER max	CL	Ordering no.
32	M10 x 1.25	40	10	10	20	16	20	AF010
40	M12 x 1.25	48	12	12	24	19	24	AF012
50 / 63	M16 x 1.5	64	16	16	32	25	32	AF016

Rod end Aligner



Cylinder bore Ø	KK	L1	L2	L3	H1	H2	D1	U	±θ°	Ordering no.
32	M10 x 1.25	20	14	65	17	8	28	0.75	5	AR010
40	M12 x 1.25	22	18	75	19	10	32	1	5	AR012
50 / 63	M16 x 1.5	25	22	91	27	13	41	1	5	AR016

Rod end spherical eye (ISO 8139)



Cylinder bore Ø	KK	CN H9	T	EN h12	CE	LE min	ER max	AX	SW	Z	Ordering no.
32	M10 x 1.25	10	10.5	14	43	15	14	20	17	13°	AP010
40	M12 x 1.25	12	12	16	50	17	16	22	19		AP012
50 / 63	M16 x 1.5	16	15	21	64	22	21	28	22	15°	AP016

AIR CYLINDER

Series A75, A76

Cat No A75, A76 - 01 - 01

How to order

Model		Bore Ø (mm)		Stroke (mm)		Mountings	
76	Standard cylinder	032	- Ø 32	025	- 25	L	- Front foot mounting
75	Magnetic cylinder	040	- Ø 40	040	- 40	D	- Double foot mounting
		050	- Ø 50	050	- 50	M	- Front trunnion
		063	- Ø 63	080	- 80	N	- Rear trunnion
				100	- 100		
				125	- 125		
				160	- 160		
				200	- 200		
				250	- 250		
				300	- 300		
				320	- 320		
				400	- 400		
				500	- 500		

Example:

Ordering no. for standard cylinder with 32 dia bore, 100 mm stroke with Double foot mounting : **A76 032 100 D**



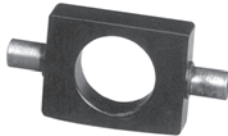
Note:

If ordered as 32 dia, 100 mm stroke cylinder, Basic cylinder **A76 032 100** will be supplied.

For repeat order when the details are taken from cylinder nameplate, mention the mounting style separately.

For ordering **Accessories**: mention part numbers in corresponding tables.

For ordering individual **Mounting** kits (If needed separately): mention the ordering numbers as below

Cylinder bore Ø	Front Foot mounting	Double Foot mounting	Trunnion (Front or Rear)
			
32	ML4032	MS4032	MT030
40	ML4040	MS4040	MT038
50	ML4050	MS4050	MT045
63	ML4063	MS4063	MT045

For your special requirements of cylinders or for further informations contact your regional dealer or **JANATICS**

Example:

Ordering no. for standard cylinder with 32 dia bore, 100 mm stroke with Basic : **A76 032 100**

For your special requirements of cylinders or for further informations contact your regional dealer or **JANATICS** Subject to change