

AllTech Pneumatics pty ltd

STM 2/2-Way Pilot Operated Solenoid Valve - Normally Closed

Solenoid Valves Numbering System for Order

Position description	1	2	3	4	5	6	7	8	9	10
	Valve Series	Mode of Operation	Coil Type	Coil Class	Voltage	Seal Material	Body Material	Pipe Size	Orifice (φ mm)	Options
E.G.	STM	1	W	H	01	T	1	D	15	<input type="checkbox"/>
	STM	1: Normally Closed 2: Normally Open	W: Metallic Housing, Lead wires A: Metallic Housing, DIN Standard D: DIN Standard Connections, Fully Encapsulated N: Lead Wires, Water-tight, Fully Encapsulated S: NASS Coil X: Explosion-proof M: SM Coil	H: H Class F: F Class H: H Class F: F Class	02=220VAC 230VAC 50/60HZ 01=110VAC 120VAC 50/60HZ 05=24VAC 13=DC24V 12=DC12V Contact the company for other voltage	T: Teflon +Fiberglass (for orifice under φ 5.5mm only) V: VITON E: EPDM N: NBR	1=Forged Brass 4= SS304 (Normal regualtions) 3= SS316 4= SS304	A: 1/8" B: 1/4" C: 3/8" D: 1/2" E: 3/4" G: 1" H: 1 1/4" J: 1 1/2" K: 2" F: Flange Connection	C3=2.5 C6=4.5 15=15. C6=4.5 15=15. 20=20. 25=25. 35=35. 50=50. 25=25. 35=35. 40=35. 50=50. C7=5.5	L: Neon Lamp N: NPT Connection T: Timers M: Manual Override

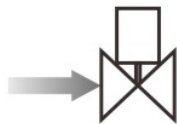
STM 2/2-Way Pilot Operated Solenoid Valve - Normally Closed

- 1:** 2-Way normally closed solenoid valve; Closed when de-energized, open when energized.
- 2:** Body material: brass
- 3:** Max. Allowable pressure 40kgf/cm²;
Ambient Temp. 0°C~65°C (F CLASS) , 0°C~80°C (H CLASS)
- 4:** Serialized products, small in size, large flow rate, widely use.
- 5:** Flow as the arrow, mounts in any position; Best position is Solenoid vertical and upright direction.
- 6:** Voltage: 220VAC/230VAC/240VAC/110VAC/24VAC 50/60HZ 24VDC/12VDC;
Voltage Tolerance: + 10% to -10% applicable voltage.
- 7:** Coil can fix Germany NASS Coil, Standard storage: 220VAC/230VAC/240VAC 50/60HZ 24V
- 8:** This series valves are offered Teflon for Seals to provide on-off control of various fluids.

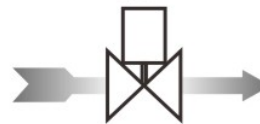


Normally Closed

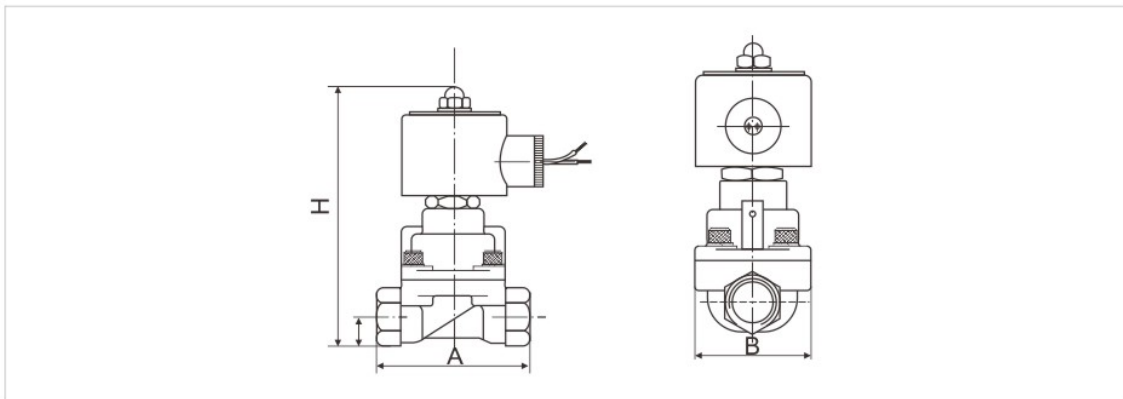
De-energized
Closed



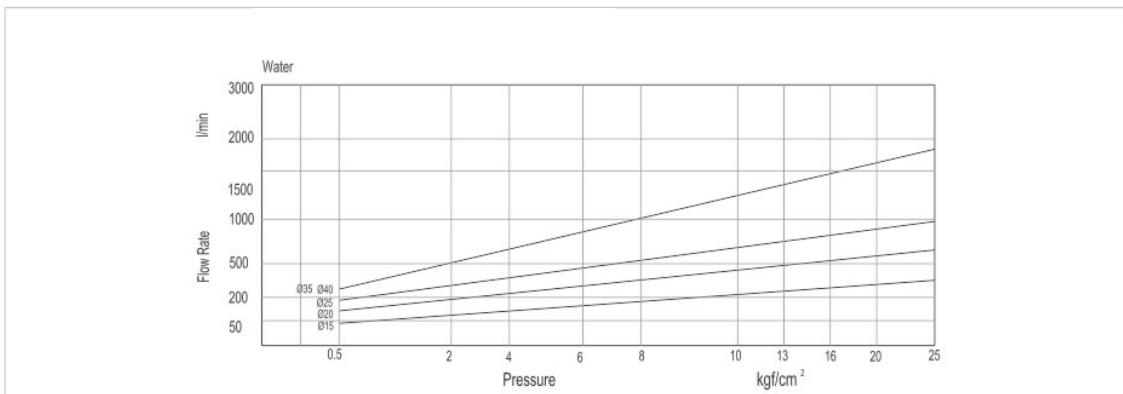
Energized
Open



Construction, External Dimensions Chart



Flow Chart



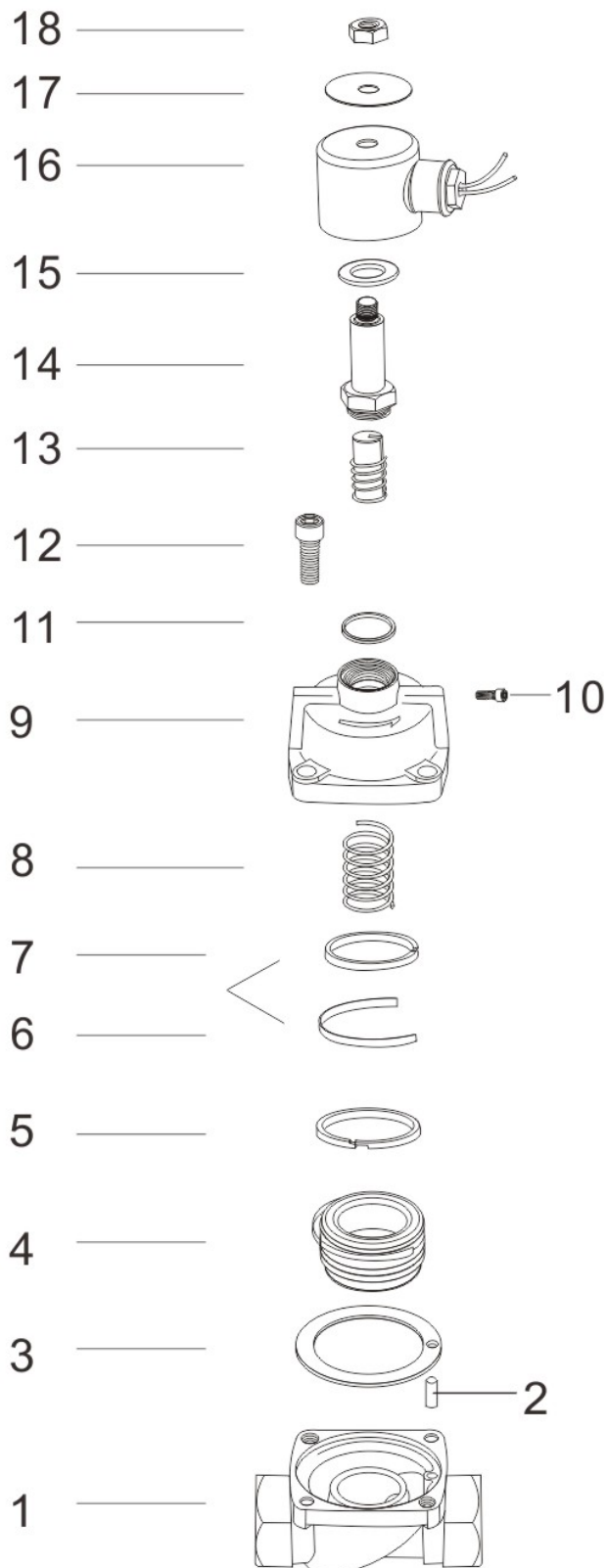
STM 2/2-Way Pilot Operated Solenoid Valve - Normally Closed

Valve Selection List

Pipe Conn- ection	Orifice mm	CV Factor	Operating pressure differential (kgf/cm ²)								Max. Fluids Temp.	Coil Type	Power consumption		Coil Class	External Dimensions Length x Width x Height A x B x H	Weight (KG)	
			Min.	Max.									VA AC 220 V	W DC 24 V				
				Air Gas		Water Hot water Liquids		Light oil		Steam AC/ DC								
				AC	DC	AC	DC	AC	DC									
1/8 "	2.5	0.23	0	8	8	8	8	6	6	10	180	S	22	13	H	48×25×85.5	0.45	
	2.5	0.23	0	13	13	13	13	7	7		110	D	22	13	F	48×25×85.5	0.45	
	2.5	0.23	0	13	13	13	13	5	5		135	D	22	13	H	48×25×85.5	0.45	
	2.5	0.23	0	13	13	13	13	7	7		80	D	22	13	F	48×25×85.5	0.45	
	4.5	0.6	0	7	4	7	4	4	4	7	165	S	22	13	H	58×25×85.5	0.55	
	4.5	0.6	0	7	4	7	4	4	4		110	D	22	13	F	58×25×85.5	0.55	
	4.5	0.6	0	7	4	7	4	4	4		135	D	22	13	H	58×25×85.5	0.55	
1/4 "	2.5	0.23	0	7	4	7	4	4	4	10	180	S	22	13	H	48×25×85.5	0.4	
	2.5	0.23	0	13	13	13	13	7	7		110	D	22	13	F	48×25×85.5	0.4	
	2.5	0.23	0	13	13	13	13	7	7		135	D	22	13	H	48×25×85.5	0.4	
	2.5	0.23	0	13	13	13	13	7	7		80	D	22	13	F	48×25×85.5	0.4	
	4.5	0.6	0	7	4	7	4	4	4	7	165	S	22	13	H	58×25×85.5	0.5	
	4.5	0.6	0	7	4	7	4	4	4		110	D	22	13	F	58×25×85.5	0.5	
	4.5	0.6	0	7	4	7	4	4	4		135	D	22	13	H	58×25×85.5	0.5	
3/8 "	15	4.5	0.5	25	20	25	20	20	20		110	D	33	32	F	75×52×129	1.25	
	15	4.5	0.5	25	20	25	20	20	20	10	185	W	30	25	H	75×52×129	1.25	
1/2 "	15	4.5	0.5	25	20	25	20	20	20		110	D	33	32	F	75×52×129	1.2	
	15	4.5	0.5	25	20	25	20	20	20	10	185	W	30	25	H	75×52×129	1.2	
3/4 "	20	9.0	0.5	25	20	25	20	20	20		110	D	33	32	F	85×60×141	1.5	
	20	9.0	0.5	25	20	25	20	20	20	10	185	W	30	25	H	85×60×141	1.5	
1 "	25	13	0.5	25	20	25	20	20	20		110	D	33	32	F	100×70×148	1.9	
	25	13	0.5	25	20	25	20	20	20	10	185	W	30	25	H	100×70×148	1.9	
1 1/4 "	35	26	0.5	25	20	25	20	20	20		110	D	33	32	F	120×90×168	3.6	
	35	26	0.5	25	20	25	20	20	20	10	185	W	30	25	H	120×90×168	3.6	
1 1/2 "	35	26	0.5	25	20	25	20	20	20		110	D	33	32	F	120×90×168	3.5	
	35	26	0.5	25	20	25	20	20	20	10	185	W	30	25	H	120×90×168	3.5	
2 "	45	45	0.5	25	20	25	20	20	20		110	D	33	32	F	150×110×190	4.5	
	45	45	0.5	25	20	25	20	20	20	10	185	W	30	25	H	150×110×190	4.5	

STM 2/2-Way Pilot Operated Solenoid Valve-Normally Closed

Components Chart



Code	Components
01	Valve Body
02	Fixed Bolt
03	Body Seals Ring
04	Piston Assembly
05	Piston Ring 1
06	Elastic Ring
07	Piston Ring 2
08	Piston Spring
09	Valve Cover
10	Steel Ball
11	Plunger Tube Seal Ring
12	Bolts
13	Plunger Assembly
14	Plunger Tube Assembly
15	Plate
16	Coil
17	Label
18	Lock nut