

COMPACT VALVE - 1/8

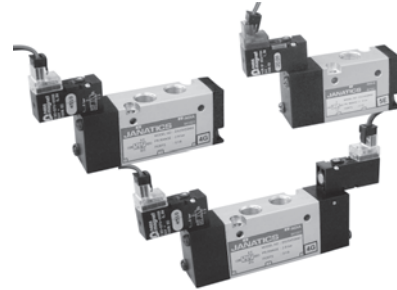
Series DS2

Cat No DS2 - 01 - 18 - A

COMPACT VALVE (10mm Coil) - G1/8

Features

- ❑ Suitable for manifold mounting
- ❑ Mounting provision for individual unit
- ❑ Compact size
- ❑ Manual override
- ❑ 24V DC with 10mm coil width

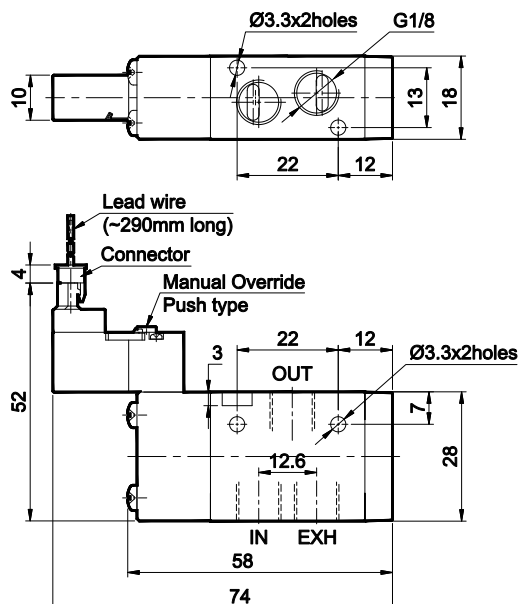


Technical Specifications

Model	DS2
Type	3/2, 5/2
Design	Spool type
Port Size	Inlet, Outlet, Exhaust - G1/8
Medium	Compressed air - Dry, filtered, lubricated
Working Pressure range	2 - 8 bar
Recommended oil for lubrication	ISO VG32 (Servo system 32)
Ambient / Medium temperature	5° - 50° C
Flow [®]	450 lts/min
Materials of construction	Aluminium, Nitrile, Brass, Acetal, PBT, Zinc
Electrical	
Coil width	10 mm
Voltage	24 V DC (± 10% Fluctuation in voltage)
Power consumption	1 W
Duty cycle	Continuous
Current at rated voltage	45 mA
Class of insulation	Class F
Type of coil protection	IP40

@ Inlet pressure 6 bar, and pressure drop 1 bar

3 / 2 Single Solenoid pilot operated valve with spring return



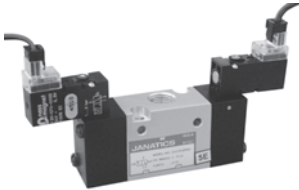
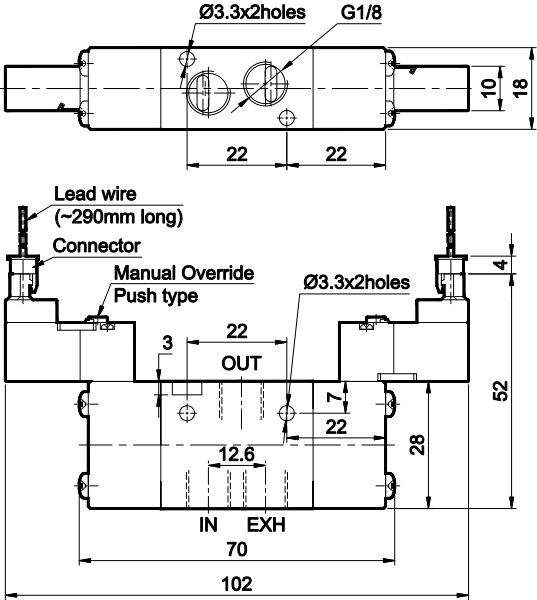
1 - Inlet, 2 - Outlet, 3 - Exhaust

Ordering No	DS234SR660-W2	DS244SR660-W2
Type	Normally open	Normally closed
Symbol		

COMPACT VALVE - 1/8
Series DS2

Cat No DS2 - 01 - 18 - A

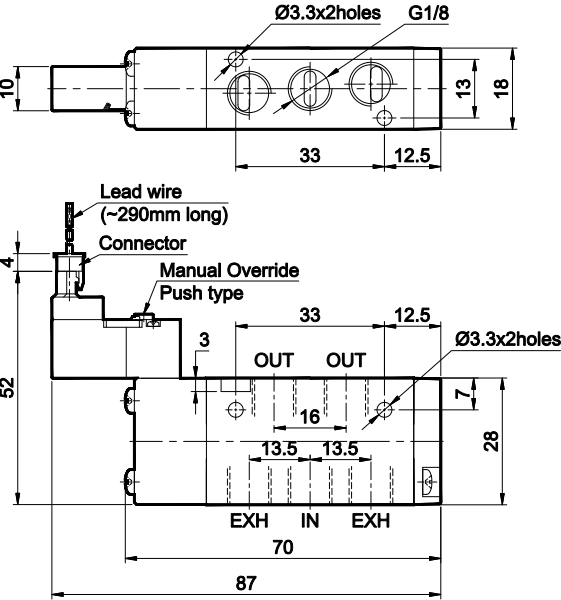
3 / 2 Double solenoid pilot operated valve



1 - Inlet, 2 - Outlet, 3 - Exhaust

Ordering No	DS234SS660-W2	DS244SS660-W2
Type	Normally open	Normally closed
Symbol		

5 / 2 Single solenoid pilot operated valve with spring return



1 - Inlet, 2,4 - Outlet, 3,5 - Exhaust

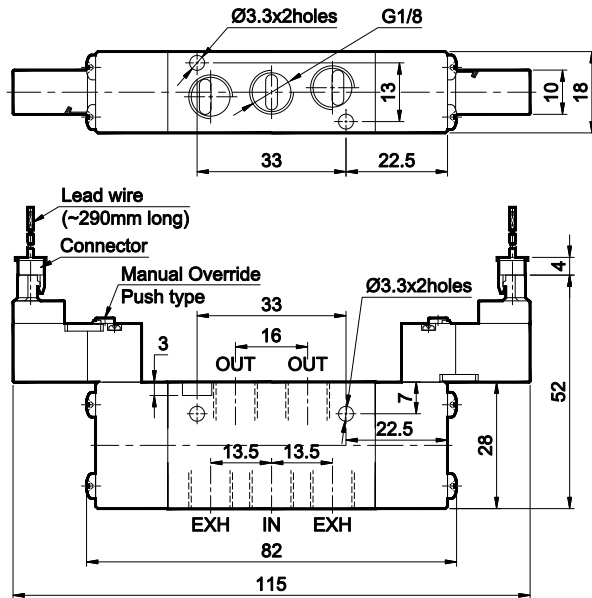
Ordering No	DS254SR660-W2
Symbol	

COMPACT VALVE - 1/8

Series DS2

Cat No DS2 - 01 - 18 - A

5 / 2 Double solenoid pilot operated valve



1 - Inlet, 2,4 - Outlet, 3,5 - Exhaust

Ordering No	DS254SS660-W2
Symbol	

How to Order

While ordering valves, mention the model number given in the corresponding tables.

Spare part ordering number for solenoid valve, 10mm coil - **E64005-W2**