

COMPACT VALVE - 1/4

Series DS5

Cat No DS5 - 01 - 02

COMPACT VALVE - G1/4

Features

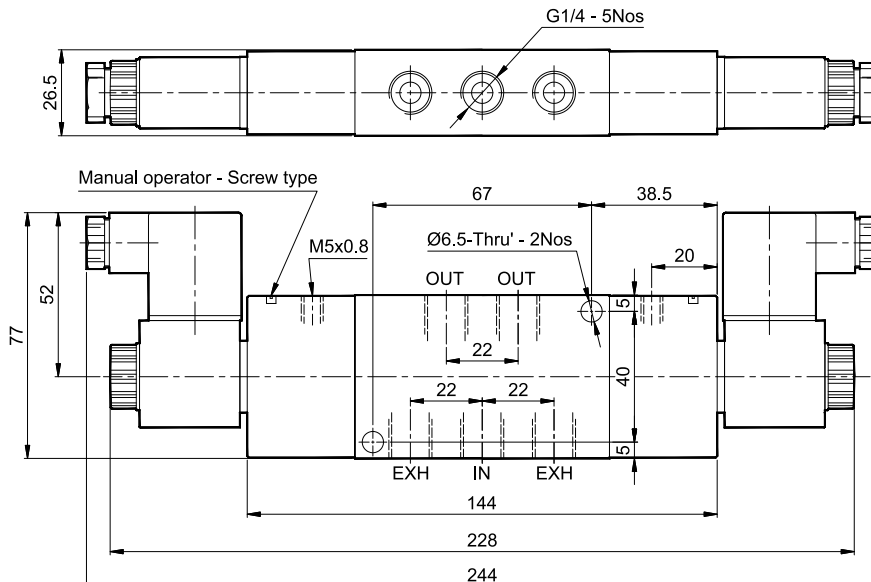
- Mounting provision for individual unit
- Compact size
- Manual override
- Wide range of coil voltages
- Suitable for manifold mounting (M004...series)

Technical Specifications

Model	DS5
Type	5/2
Design	Spool type
Port Size	Inlet, Outlet, Exhaust - G1/4 Pilot (14, 12) - M5
Medium	Compressed air filtered, lubricated
Working Pressure range	2 - 10 bar
External Pilot Pressure range	2 - 10 bar
Recommended oil for lubrication	ISO VG32 (Servo system 32)
Ambient / Medium temperature	5° - 60° C
Nominal Flow [®]	1100 lts/min
Materials of construction	Aluminium, Nitrile, Brass, Acetal, PBT, Zinc, Steel
Electrical	
Coil width	22 mm
Voltage (V) ± 10%	AC (50 Hz) - 24, 48, 110, 220
	DC - 12, 24, 48, 110
Power consumption	AC - 6 VA, DC - 5 W
Duty cycle	Continuous
Class of insulation	Class F
Type of coil protection	IP65
Cable entry (PG9)	Suitable for Ø6 to Ø8 OD Cable (2wire / 3wire)

® Inlet pressure 6 bar, and pressure drop 1 bar

5 / 2 Double external solenoid pilot valve



1 - Inlet, 2,4 - Outlet, 3,5 - Exhaust

Ordering No*	DS555TT61
Symbol	

* For ordering no, voltage to be added

COMPACT VALVE - 1/4

Series DS5

Cat No DS5 - 01 - 02

How to order

1. Solenoid valve + “ Connectors without LED ”

While ordering Solenoid operated valves, please mention the suffix given below along with the model number to indicate the required voltage

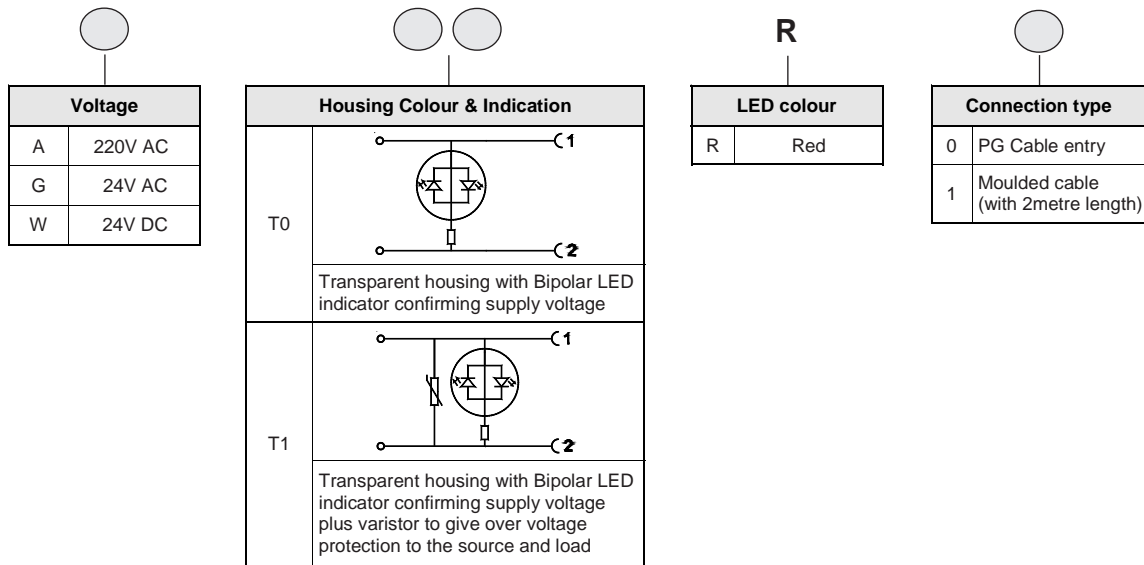
A	220V AC	Q	110V DC
B	110V AC	S	48V DC
D	48V AC	W	24V DC
G	24V AC	R	12V DC

Example

- a. The ordering no. for 5/2 Double external solenoid pilot valve, 24V D.C coil with PG cable is **DS555TT61-W**
- b. The ordering no. for 5/2 Double external solenoid pilot valve, 24V D.C coil with Moulded cable is **DS555TT61-W1**

2. Solenoid valve + “ Connectors with LED ”

While ordering Solenoid operated valves with LED connectors, given below in the corresponding tables.



Example

The Ordering no for 5/2 Double external solenoid pilot valve (1/4"), 24V DC, connectors with LED of Transparent colour housing with Bipolar LED and varistor, Red colour LED with moulded cable: **DS555TT61-WT1R1**

Coil spare ordering no.

Coil (without connector)	Ordering no.	
	AC	DC
Voltage		
220	AC23A	- NA -
110	AC23B	DC24Q
48	AC23D	DC24S
24	AC23G	DC24W
12	- NA -	DC24R